



GENERAL DESCRIPTION 功能敘述

The M45026 is a CMOS ASIC encoder. It will en-code 9 parallel inputs and serially transmit them to the output when \overline{TE} depressed. These address inputs are 3 states i.e. LOW (0) 、 OPEN (X) and HIGH (1).

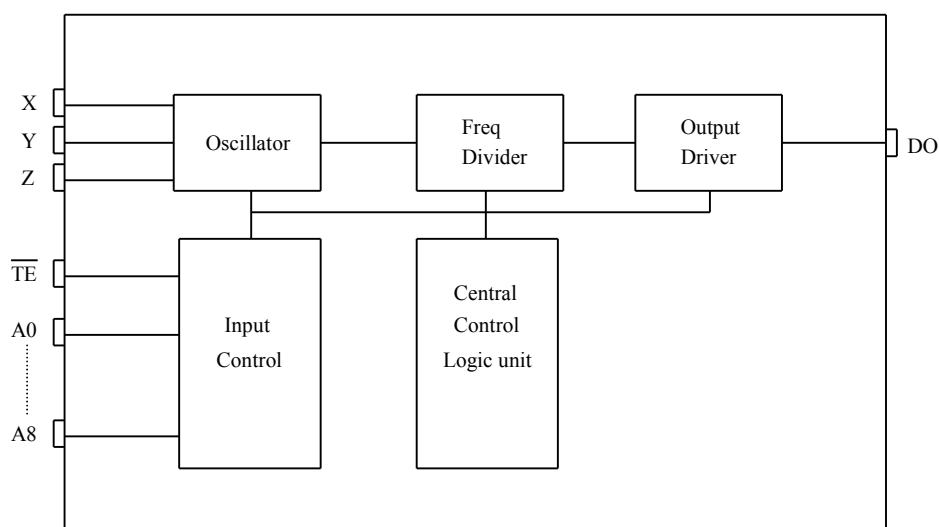
FEATURES 產品特長

- RC oscillator.
- $3^9 = 19,683$ codes, "0", "X", "1" Tri-states.
- Minimum two transmission words.

APPLICATIONS 產品應用

- Car/home alarm system, garage control etc..

BLOCK DIAGRAM 功能方塊圖



*All specs and applications shown above subject to change without prior notice.
(以上電路及規格僅供參考,本公司得逕行修正)



EN/DECODER
M45026/7/8

ABSOLUTE MAXIMUM RATING

(TA=25°C)

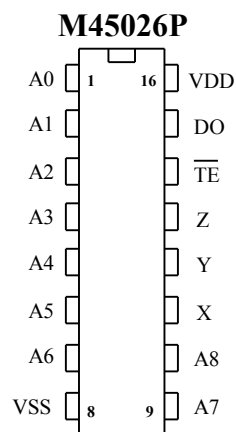
Parameter	Rating	Unit
Supply Voltage	-0.3 to 15	V
Input Voltage	-0.2~V _{DD} +0.2	V
Operating Temperature	-20 to 75	°C
Storage Temperature	-50 to 125	°C

ELECTRICAL CHARACTERISTICS

Characteristics	Sym.	Min.	Typ.	Max.	Unit	Conditions
Operating Voltage	V _{DD}	3	—	15	V	
Operating Current	I _{OP}	—	0.1	1	mA	No load
Quiescent Current	I _{SB}	—	0.1	0.5	μA	
Output Drive Current	I _O	—	2	—	mA	@V _{DS} =1.2V
Input Voltage	V _{IH}	V _{DD} -0.2	V _{DD}	V _{DD}	V	
	V _{IL}	V _{SS}	V _{SS}	V _{SS} +0.2		
Oscillator Frequency	F _{OSC}	—	22	—	KHz	External±30%

PIN DESCRIPTION

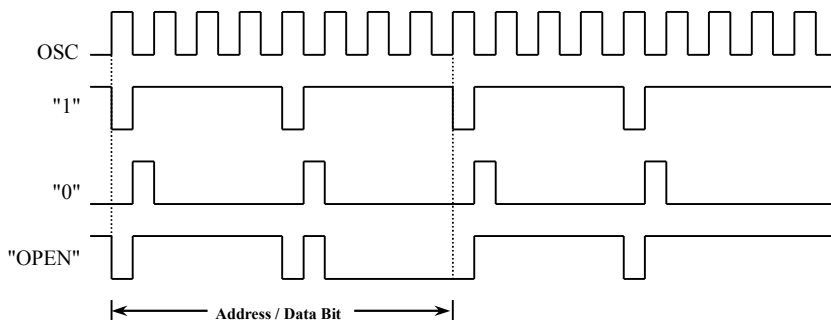
No.	Name	Description
1~7	A0~A6	3 states address inputs
8	VSS	Negative power supply
9~10	A7、A8	3 states address inputs
11	X	Oscillator input
12	Y	Oscillator output
13	Z	Oscillator output
14	TE	Transmit enable
15	DO	Data output
16	VDD	Positive power supply



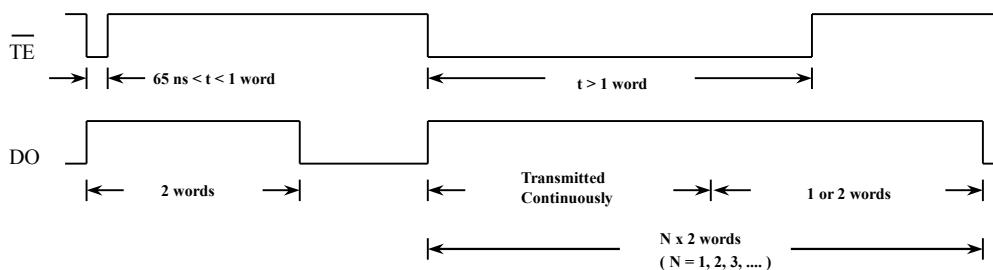


TIMING WAVEFORM

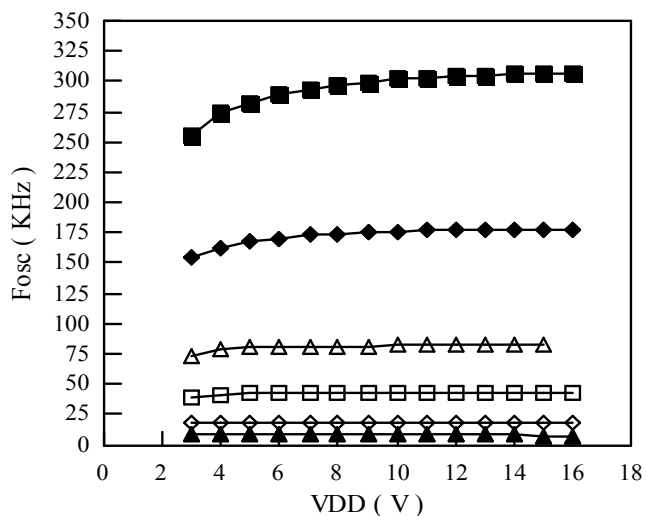
(1) Bit format



(2) TIMING DIAGRAM



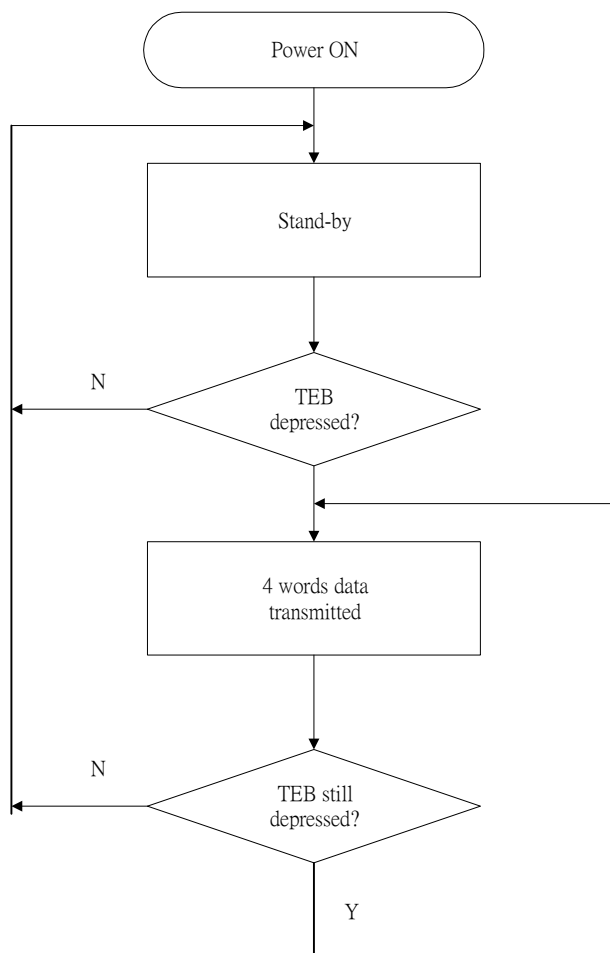
M45026 F-V Curve



- $R_z=20\text{K}\Omega$, $C_y=120\text{PF}$, $R_x=10\text{K}\Omega$
- ◆ $R_z=20\text{K}\Omega$, $C_y=250\text{PF}$, $R_x=10\text{K}\Omega$
- △ $R_z=20\text{K}\Omega$, $C_y=500\text{PF}$, $R_x=10\text{K}\Omega$
- $R_z=20\text{K}\Omega$, $C_y=1000\text{PF}$, $R_x=10\text{K}\Omega$
- ◇ $R_z=20\text{K}\Omega$, $C_y=2200\text{PF}$, $R_x=10\text{K}\Omega$
- ▲ $R_z=20\text{K}\Omega$, $C_y=5000\text{PF}$, $R_x=10\text{K}\Omega$

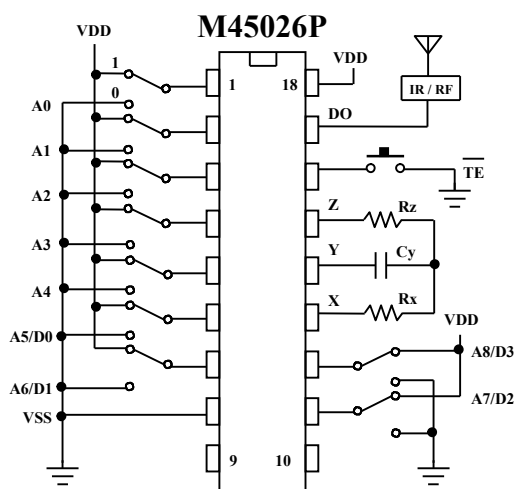
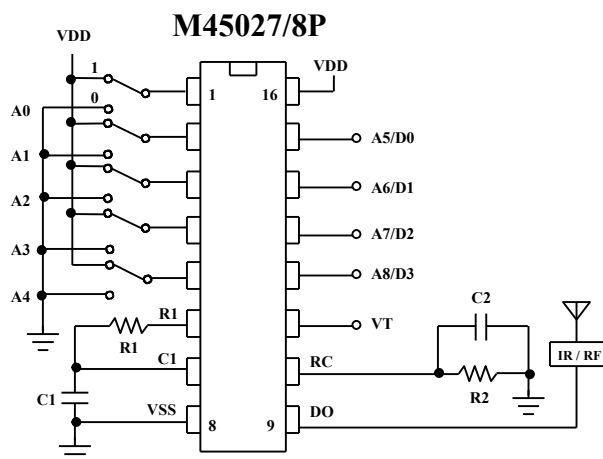
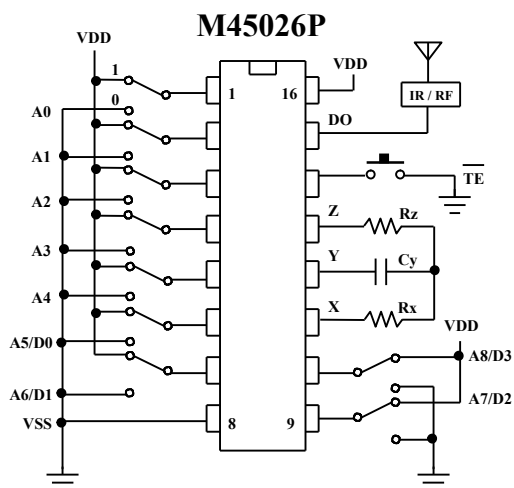


OPERATING FLOWCHART





APPLICATION DIAGRAM 參考電路圖



* VDD@12V ~ M45026 : Rx=20KΩ, Rz=10KΩ, Cy=2020pF ;
M45027/8 : R1=10KΩ, C1=8200pF, R2=100KΩ, C2=0.015 μF.

* All specs and applications shown above subject to change without prior notice.
(以上電路及規格僅供參考,本公司得逕行修正)